

Beekeeping on the Prairies

Looking into Specific Management Practices



Money

Areas where I focused my money

- Lifting
- Extraction capacity
- Wintering



Lifting
Honey

Adopted a system
to mechanize the
entire honey pull



Ezyloader 300

- Electric Over Hydraulic
- lifts 650 lbs
- 16' reach
- box and pallet attachments



User Friendly



Simple Design

Utilize existing
equipment styles





Clearing boxes with Escapes









Palletise















Extraction Capacity



60 Frame Cowen Extractor

275-350 boxes per day
3-4 person crew
18-22 barrels on 7 hour
extraction





De-Boxer



















Wax Rendering



Honey Pull Ends -September



Fall Feeding

Pails vs Open Feeding



Open Feeding



Winter













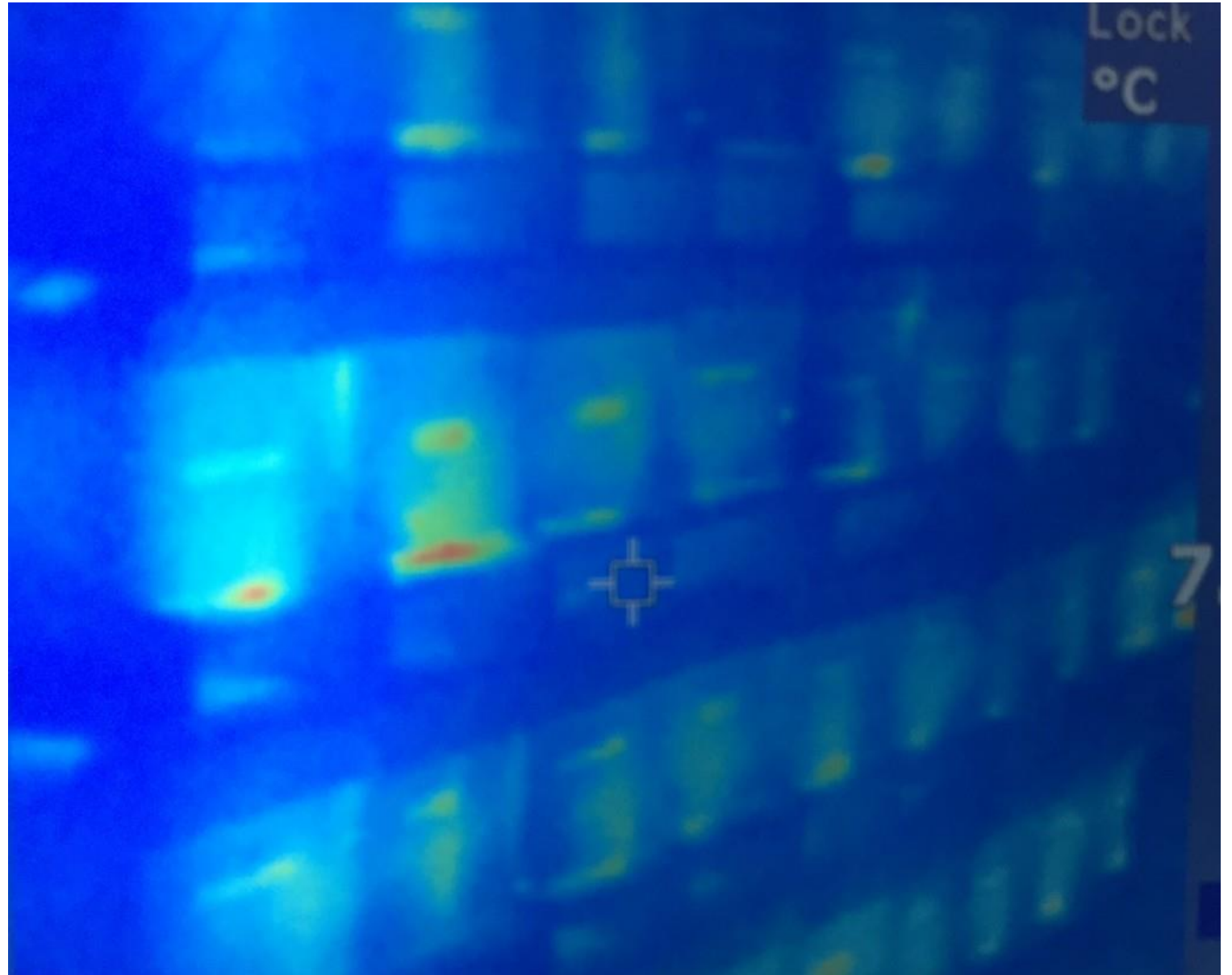


Remove the Heat

Each hive will produce 15-20w heat

The bees will leave the hive if too warm +10-15 Degrees C

20-25 square feet per hive or more



Advantages of Indoor Wintering

Protects the hives from our extreme Manitoba winter weather

Target the hives most efficient state of “dormancy”

-undisturbed state of rest

-“zone out”, CO2 envelope











03/08/2013

















Questions?

